



# ELNUR GABARRON<sup>®</sup>

INSTRUCCIONES DE INSTALACIÓN  
INSTALLATION INSTRUCTIONS



ACUMULADOR DE CALOR INTELIGENTE

SMART STORAGE HEATER

## ECOMBI PRO

MODELOS/MODELS  
ECO15 PRO  
ECO20 PRO  
ECO30 PRO  
ECO40 PRO



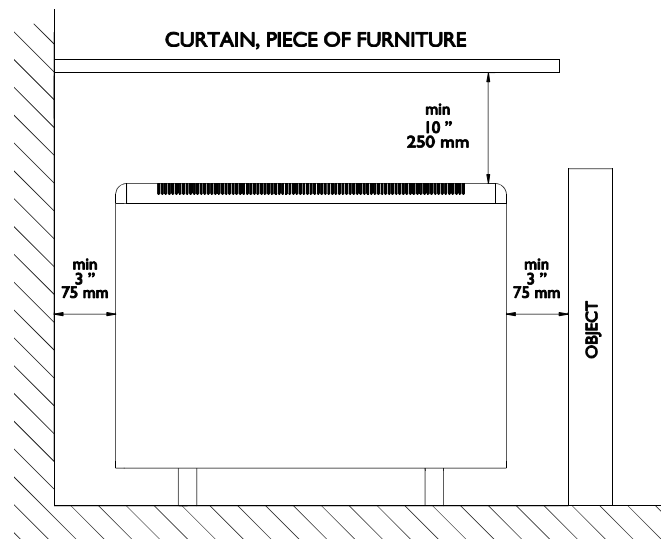
*Por favor, escanee este código para descargar el manual de funcionamiento de la unidad.  
Please, scan this code to download the user operating instructions of the unit.*

*Por favor, lea estas instrucciones atentamente antes de instalar o utilizar el aparato por primera vez.  
Please read these instructions carefully before installing or using this appliance for the first time.*

## I. -IMPORTANT INFORMATION

When using electrical appliances, basic precautions should always be followed to reduce the risk of fire, electric shock, and injury to persons, including the following:

- Keep combustible materials, such as furniture, pillows, bedding, papers, clothes, etc. and curtains at least a foot (30cm) from the front, sides and rear of the heater. It is essential that the indicated minimum clearances are maintained.
- **CAUTION** — Some parts of this product can become very hot and cause burns. Particular attention must be given where children and vulnerable people are present.
- This appliance can be used by children aged from 8 years and above and persons with reduced physical, sensory or mental capabilities or lack of experience and knowledge if they have been given supervision or instruction concerning the use of the appliance in a safe way and understand the hazards involved. Children must not play with the appliance. Cleaning and user maintenance must not be made by children without supervision.
- Children aged from 3 years and less than 8 years shall only switch on/off the appliance provided that it has been placed or installed in its intended normal operating position and they have been given supervision or instruction concerning use of the appliance in a safe way and understand the hazards involved. Children aged from 3 years and less than 8 years shall not plug in, regulate and clean the appliance or perform user maintenance.
- Children of less than 3 years should be kept away unless continuously supervised.
- Do not operate any heater after it malfunctions. Disconnect power at service panel and have heater inspected by a reputable electrician before reusing. To disconnect heater, turn controls to off, and turn off power to heater circuit at main disconnect panel.
- Do not insert or allow foreign objects to enter any ventilation or exhaust opening as this may cause an electric shock or fire or damage the heater.
- Do not use this heater to dry clothes. To prevent a possible fire, do not block air intakes or exhaust in any manner. Air inlets and outlets provide proper operation of the appliance and prevent its overheating. **DO NOT** cover air inlet and outlet grills.
- A heater has hot and arcing or sparking parts inside. Do not use in areas where gasoline, paint, or flammable vapors or liquids are used or stored. The use of these heaters is forbidden in any area where there is a presence of gases, explosives or inflammable objects. Never open a charged heater.
- **SAVE THESE INSTRUCTIONS.** This guide must be kept and given to any new user. Use this heater only as described in this manual. Any other use not recommended by the manufacturer may cause fire, electric shock, or injury to persons. The warranty of the heater will not cover any damage caused by non observance of any of these instructions.
- Do not use this heater outdoors.



**WARNING:** In order to avoid overheating do not cover the heater.

## **2. - INSTALLATION INSTRUCTIONS**

The symbols used in the text are explained below:



WARNING

This indication shows the possibility of causing death from electric shock.



WARNING

This indication shows the possibility of causing death or serious injury.



CAUTION

This indication shows the possibility of causing injury or damage to properties only.



Symbol for useful information.

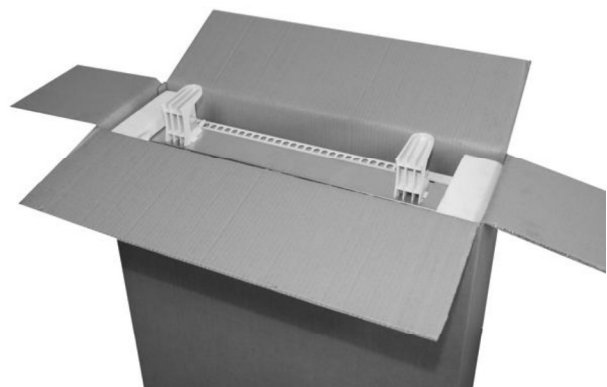
**IMPORTANT:** Wiring procedures and connections shall be in accordance with the national and local codes having jurisdiction.

- The installation must be carried out in accordance with the current local electrical regulations. Any installation or reinstallation has to be carried out by an experienced technician.
- Neither the connecting cable nor any other object must come into contact with the hot unit.
- Please check that the voltage in the rating label fits the power supply. The nominal charging period of this heater is indicated in the rating label. This appliance must be grounded.
- The appliance should not be installed just below an electrical socket.
- The appliance must be installed in such a way that it is impossible for anyone using a bath or shower, to touch the controls.
- If during any installation the thermal insulation shows any sign of damage, it must be replaced.
- This heater should be switched off at the circuit breaker before any repair work is carried out. This should also be done during times of the year when heat is not required.
- This appliance is only for permanent connection to a fix installation. The supply circuit to the heater must incorporate a double pole isolating switch having a contact separation of at least 3 mm.
- After installation a survey of the first charging cycle should be carried out to ensure that the main input thermostat switches off. Ventilate the room during this first cycle.
- To maintain stability, it is essential that the heater is placed on a level surface and care should be taken to avoid irregular surfaces, such as may result from carpets or tiled surrounds partially protruding under the heater.
- The presence of air particles of smoke, dust and other pollutants could, in time, discolor the walls and surfaces around the heater.
- Incorrect time settings, erroneous programming of the reduced rate time and too high temperature settings may result in a high cost of your electricity bill.

In order to achieve a correct installation of this device, follow these steps:

1. - Choose the right location to install ECOMBI PRO. The minimum clearances must be respected from the appliance to any combustible material such as furniture or curtains. **To reduce the risk of fire, do not store or use gasoline or other flammable vapors and liquids in the vicinity of the heater.**

2. - Open the carton at the indicated side and install the supporting feet without removing the heater.



Turn the carton upside down to allow the heater to stand on its feet and remove the carton. Check that it is the correct model and that it is in good conditions.



Check that all parts have been delivered and are intact.

- 1 Ecombi PRO heater casing.
- 1 bag containing 2 screws and 2 rawl plugs.
- 2 supporting feet.
- This guide.

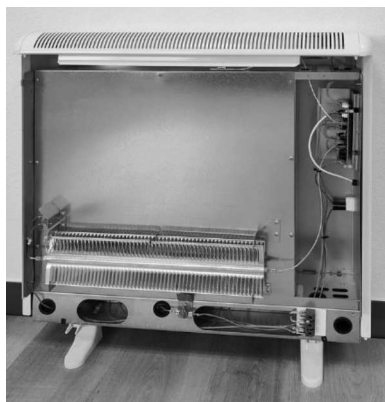


*The casing and storage bricks are supplied separately. Check the supplied bricks packages correspond to the ones indicated on the heater carton.*



*The heater operation is not affected if bricks with minor damage are used.*

3. - Take off the front panel by removing the two screws located at the bottom. Fix the lateral fittings to the metal structure by using the appropriate screws.



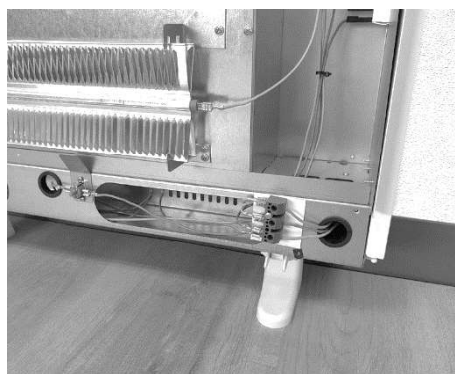
4. - Place ECOMBI PRO in your selected installation area. Use the heater fixing holes as a template and mark the wall through the fixing holes with a pencil. Drill the required holes into the wall. Place the rawl plugs and screws into the holes before the appliance installation but do not fasten them tightly.

5. Attach ECOMBI PRO to the rawl plugs with the crews. **IT MUST NOT BE HUNG ON THE SCREWS;** these are used only to prevent the device from overturning and not to support it. If there is any doubt concerning the wall strength, consult the corresponding construction specialist. The appliances are heavy; it is the installer responsibility the correct installation and wall support of these devices to prevent them from overturning.

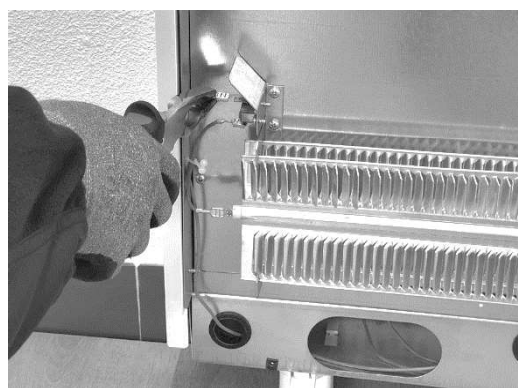
6. - Wire correctly the heater connecting Line, Neutral and Earth in the corresponding screw of the connection block. Tighten properly the connection block screws. Do not leave any remaining wire inside the heater.



**WARNING** *Touching live connections can cause serious personal injury. Disconnect power at the home's electrical protection panel before installation.*

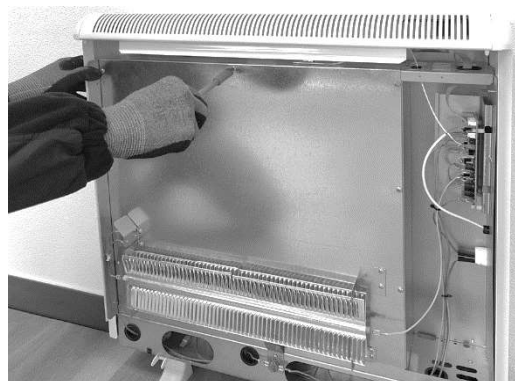


7. - Disconnect the aluminum heating element by removing the FAST-ON terminal on each end of the element.



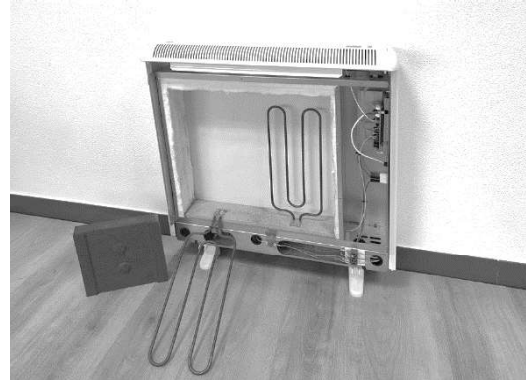
**WARNING** *Steel edges can cut.*

Next unscrew the inner panel and remove it.

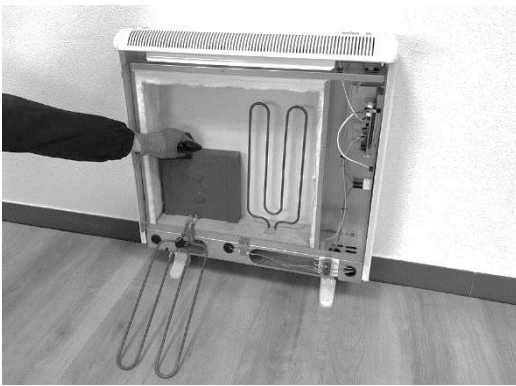


**CAUTION** *In the interior part of this inner panel there is a very delicate thermal insulation MICROTHERM panel. It has to be handled with extreme care. AVOID TOUCHING IT.*

8. Do not disconnect the electrical heating elements. Remove the packing cardboard. Lift and tilt the elements outwards being careful not to damage the insulation on the bottom of the heater.



9. - Place the storage bricks carefully, with the flat side facing the back of the heater. Arrange two row levels of bricks.



10. Place the heating elements back into their original position. Place the other two rows of storage bricks with the flat side facing out and always on the heating elements supporting tabs.



11. Replace the inner front panel. If the bricks have been fitted correctly you will have no difficulty in replacing the panel. Make sure the bottom edge of the inner panel is inside the front lip of the heater. Please see below:



12. - Reconnect the two FAST-ON terminals to the aluminum heating element attached to the inner panel at both ends.

13. – When replacing the exterior front panel, align the 2 plastic upper pegs on the heater with the holes in the exterior panel. Push the top up into place and push the bottom in until it rests on the plastic feet.

14. - Replace the front panel with screws.

## RELOCATION



**WARNING:** *Relocation to another location must be carried out by an experienced technician.*

If during reinstallation the thermal insulation shows any sign of damage, it must be removed and replaced by an identical part.

## MANUALLY RESET TEMPERATURE LIMITER

This heater employs a manually reset temperature limiter (see LR in the connection diagram).

This safety device operates when high temperatures are reached at the top of the heater. It requires re-setting manually: Let the heater cool. The cause of overheating should be investigated.



**WARNING:** *Re-setting manually must be carried out only by an experienced technician.*

Turn off the heater at the circuit breaker.

Take off the front panel by removing the two screws located at the bottom. Find the limiter LR in the connection diagram and push the small pin until a click is heard.

## 3. - OPERATING INSTRUCTIONS

### 3.1. General information



**CAUTION:** DO NOT USE THIS HEATER TO DRY CLOTHES. Do not cover this heater at any time.

#### CONNECTION / DISCONNECTION

Power switch. All models are equipped with a switch on the back side panel. It is used to connect and disconnect ECOMBI PRO.



#### KEYBOARD:



Keep pressed the button to access the advanced configuration. Press this button to go back in the different menus.



Press the button to confirm values in the different menus.



Press the key to increase the displayed value or to advance through the different options available.



Press the key to decrease the displayed value or to move through the different options available.

#### ON/OFF



Once the heater is connected to a main supply you can turn the heater ON by switching the main ON/OFF switch positioned at the rear right side of the heater as shown above.



#### BACKLIGHT

Pressing any button, the display will illuminate with a soft white colour. After certain time if no buttons are pressed the display backlight will turn off.

Buttons only will respond when the backlight is on.

#### KEYBOARD LOCK

During any operation mode, it is possible to lock the keyboard by holding  and  simultaneously for 5 seconds. A pop-up window will confirm the keyboard lock.

To unlock the keyboard, press  and  simultaneously for 5 seconds. A pop-up window will confirm the keyboard unlock.



## **3.2. Commissioning**

An easy installation wizard is programmed in Ecombi PRO electronic control. Follow the start wizard instructions when turning your Ecombi PRO on for the first time or after resetting it to the factory settings.

### **START WIZARD - INITIAL SETTINGS.**

The Ecombi PRO electronic control will guide you through the commissioning of the unit. The steps to follow are:

a. Select language. Confirm the language in the storage heater electronic control.

b. Date & Time. Check and confirm that the default date & time in the unit is correct. If not, please change it.

c. Charging periods. 2 different charging periods can be set in Ecombi PRO. Set Charging Periods 1 & 2 according to your electricity low tariff hours.

By default, Ecombi PRO is set to an 8 hours charging period, from 00:00 to 08:00 hours. If this charging time matches your electricity low tariff hours, you do not need to make any changes in the unit configuration. Otherwise, you can change charging Periods 1 and 2 to match your electricity tariff.

If your electricity tariff is 14 hours off-peak, you must modify the charging configuration in the advance settings menu and select 14 hours nominal charging period.

d. Temperature setting. This is the last step of the start wizard. Select and confirm the room set temperature of your choice.



*With the help of the start wizard, you will set you Ecombi PRO storage heater for an automatic operation. It will charge and store the heat during the charging hours set in c.Charging Periods and it will adjust the charge level and consumption according to the set temperature of your choice.*



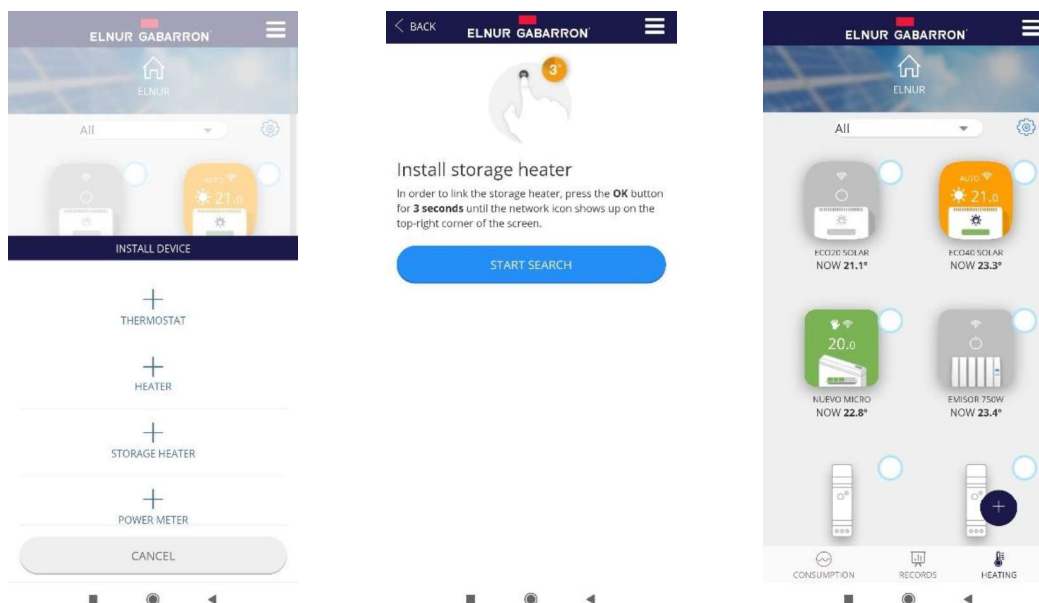
*An incorrect time, charging periods or set temperatures configuration, might result in a high cost of the electricity bill.*


## 4.- G CONTROL HUB. ELNUR GABARRON WIFI APP

It is possible to control the full operation of the unit remotely with the Elnur Gabarron Wifi Control app or the app-web (<https://remotecontrol.elnur.es>). The unit must be connected to a G-Control Hub connected to the internet to use this feature.

To associate the ECOMBI PRO unit to the G-Control Hub, follow the instructions of the installation wizard of the app.



- Open the application and login with your user and password.
- Access the heating menu in the top menu in the app.
- Press the button (+) and select the type of heater that you are going to connect (Storage heater).
- Press Start Search and follow the instructions of the installation wizard.



When required, keep pressed  button during 3 seconds until the symbol  is displayed in the storage heater display.

You can control now and adjust the settings of your storage heater using the Elnur Gabarron Wifi Control app or the app-web <https://remotecontrol.elnur.es>.

## 5.- TROUBLESHOOTING

|   |   |
|---|---|
| <p><b>ECOMBI PRO does not heat.</b></p>                               | <p>Please check it is connected and switched on.<br/>Make sure the device is not covered or the lower air inlets are not obstructed. The LR safety limit may be activated; in this case it is necessary to reset it manually. Please contact technician.</p>  |
| <p><b>ECOMBI PRO does not reach set up temperature</b></p>            | <p>Make sure that adequate temperature is selected.<br/>Make sure the storage heater is sized correctly for heat loss.</p>  |
| <p><b>Error messages in display</b></p>                               | <p>Please contact technician.</p>   |
| <p><b>ECOMBI PRO does not communicate with the G Control Hub.</b></p> | <p>Check the unit is associated, the symbol  must be shown on the display.<br/>For distances greater than 30 metros and 2-3 walls, associate first the closest units. Each unit can work as signal extender.<br/>If  symbol is flashing, check the G Control Hub connexion to the network, and if any other device in the RF Net that could be working as signal extender has been removed.</p> |

## 6.- CLEANING MAINTENANCE INSTRUCTIONS

Before cleaning, make sure the power has been turned off at the circuit breaker panel and that the heating element of the heater is cool.

Occasionally, clean dust with a dry, soft cloth. Do not use any solvent or abrasive product for cleaning.

When the Heating season is finished, please disconnect the device by turning off the power switch located at the right back of the unit or at the circuit breaker.

Any other servicing should be performed by an authorized technician.



*ECOMBI PRO has been manufactured under a fully assured quality system and using environmentally friendly processes. Once its useful life is finished please take the device to a recycling depot so that its components can be recycled in an appropriate way.*

## 7.- MAIN COMPONENTS LIST

|  |               |                                 |               |
|--|---------------|---------------------------------|---------------|
| Storage Heating Element (All except ECO15 PRO) | Ref. 15190091 | Power PCB & Fixing Bracket      | Ref. 15191890 |
| Storage Heating Element (ECO15 PRO)            | Ref. 15190875 | Keyboard PCB ECO PRO            | Ref. 15192680 |
| 350W Balancing Heating Element (ECO15/20 PRO)  | Ref. 15190111 | Room Sensor                     | Ref. 46102195 |
| 450W Balancing Heating Element (ECO30 PRO)     | Ref. 15190121 | 110°C Balancing Element Limiter | Ref. 15190725 |
| 600W Balancing Heating Element (ECO40 PRO)     | Ref. 15190131 | 135°C Cut Out Manually Limiter  | Ref. 10190460 |
| Switch   | Ref. 15190055 | PT1000 Core Sensor              | Ref. 15192140 |

## 8.- TECNICAL FEATURES

|                                 | ECO15 PRO    | ECO20 PRO    | ECO30 PRO    | ECO40 PRO    |
|---------------------------------|--------------|--------------|--------------|--------------|
| <b>Connection</b>               | 220 - 240V ~ | 220 - 240V ~ | 220 - 240V ~ | 220 - 240V ~ |
| <b>Balancing Element Output</b> | 350W         | 350W         | 450W         | 600W         |
| <b>Insulation</b>               | Class I      | Class I      | Class I      | Class I      |
| <b>Length</b>                   | 55cm         | 66cm         | 89cm         | 111cm        |
| <b>Height</b>                   | 73cm         | 73cm         | 73cm         | 73cm         |
| <b>Depth</b>                    | 18cm         | 18cm         | 18cm         | 18cm         |
| <b>Weight</b>                   | 59kg         | 77kg         | 112kg        | 147kg        |
| <b>Number of bricks</b>         | 4            | 8            | 12           | 16           |
| <b>Brick Package</b>            | <b>11072</b> | <b>11016</b> | <b>11016</b> | <b>11016</b> |
| <b>8 Hours Configuration</b>    |              |              |              |              |
| <b>Storage Heater Output</b>    | 975W         | 1300W        | 1950W        | 2600W        |
| <b>Charge Period</b>            | 8h           | 8h           | 8h           | 8h           |
| <b>Charging</b>                 | 7.8 kWh      | 10.4 kWh     | 15.6 kWh     | 20.8 kWh     |
| <b>14 Hours Configuration</b>   |              |              |              |              |
| <b>Storage Heater Output</b>    | 975W         | 650W         | 1300W        | 1300W        |
| <b>Charge Period</b>            | 14h          | 14h          | 14h          | 14h          |
| <b>Charging</b>                 | 9.5 kWh      | 9.1 kWh      | 15.5 kWh     | 18.2 kWh     |



*Storage heater elements and balancing heating element will never operate at the same time.*

EN



The symbol on the product or in its packaging indicates that this product may not be treated as household waste. Instead it shall be handed over to the applicable collection point for the recycling of electrical and electronic equipment. By ensuring this product is disposed of correctly, you will help prevent potential negative consequences for the environment and human health, which could otherwise be caused by inappropriate waste handling of this product. For more detailed information about recycling of this product, please contact your local city office, your household waste disposal service or the shop where you purchased the product. These instructions are only valid in the EU member states.

# PRODUCT FICHE

**ErP**

MODEL(S): **ELNUR GABARRON ECO 15 PRO, ECO20 PRO, ECO30 PRO, ECO40 PRO**

| Item                                     | Symbol      | Value     |           |           |           | Unit |
|--|-------------|-----------|-----------|-----------|-----------|------|
|  |             | ECO15 PRO | ECO20 PRO | ECO30 PRO | ECO40 PRO |      |
| <b>Heat Output</b>                       |             |           |           |           |           |      |
| Nominal heat output                      | $P_{nom}$   | 0.55      | 0.75      | 1.125     | 1.5       | kW   |
| Minimum heat output                      | $P_{min}$   | N.A.      | N.A.      | N.A.      | N.A.      | kW   |
| Maximum continuous heat output           | $P_{max,c}$ | 0.55      | 0.75      | 1.125     | 1.5       | kW   |
| <b>Auxiliary electricity consumption</b> |             |           |           |           |           |      |
| At nominal heat output                   | $e_{lmax}$  | 0.000     | 0.000     | 0.000     | 0.000     | kW   |
| At minimum heat output                   | $e_{lmin}$  | 0.000     | 0.000     | 0.000     | 0.000     | kW   |
| In standby mode                          | $e_{lsB}$   | <0.0005   | <0.0005   | <0.0005   | <0.0005   | kW   |

| Item   | Value. All models |
|--|-------------------|
| <b>Type of heat input</b>  |                   |
| Electronic heat charge control with room and/or outdoor temperature feedback | Yes               |
| <b>Type of heat output / room temperature control</b>                        |                   |
| Electronic room temperature control plus week timer                          | Yes               |
| <b>Other control options</b>   |                   |
| Room temperature control, with open window detection                         | Yes               |
| With distance control option   | Yes               |
| With adaptive start control  | Yes               |

|                        |   |
|------------------------|---|
| <b>Contact details</b> | ELNUR, S.A.<br>Travesía de Villa Esther, 11<br>28110 – Algete (Madrid), Spain |
|------------------------|---|

**Commission Regulation (UE) 2015/1188 of 28 April 2015. Ecodesign requirements for electric storage local space heaters.**





# ELNUR GABARRON<sup>®</sup>

## ELNUR S.A.

Travesía de Villa Esther, 11  
28110 Algete - Madrid



Tfno. Atención al Cliente:  
**+34 91 628 1440**

[www.elnurgabarron.es](http://www.elnurgabarron.es)  
[www.elnurgabarron.com](http://www.elnurgabarron.com)

